

## Shapur II

Son of Hormazd II. Reign 309 - 379 AD.

*Denominations: D, D/6, D/12; d, Obol, Obol/2; U, U/4, U/6; Pb, Pb/2, Pb/4, Pb/6, Pb/8*

Note: Gobl makes the distinction between two Type I crowns, Ia being the most common type, with small pearls (?) in the diadem band; Ib has larger pearls (or swirls). He doesn't distinguish between the two variations of each type, with and without an extra set of diadem ends behind the globe. For now, the sub-types will be omitted.

Also, the differing crowns that Gobl describes with reverse types 1, 2 and 5 also exist for the type 6 reverses. There are no Gobl numbers to designate the differences.

Regnal year to AD date conversion:

REGNAL YEAR	AD YEAR	NOTES	REGNAL YEAR	AD YEAR	NOTES
1	309		37	345	
2	310		38	346	2nd siege of Nisibis.
3	311		39	347	
4	312		40	348	
5	313		41	349	
6	314		42	350	3rd siege of Nisibis.
7	315		43	351	
8	316		44	352	
9	317		45	353	
10	318		46	354	
11	319		47	355	
12	320		48	356	
13	321		49	357	

14	322		50	358	
15	323		51	359	Shapur besieges and captures Amida.
16	324	Letter from Constantine to Shapur.	52	360	
17	325		53	361	
18	326		54	362	
19	327		55	363	Julian dies.
20	328		56	364	
21	329		57	365	
22	330		58	366	
23	331		59	367	
24	332		60	368	
25	333		61	369	
26	334		62	370	
27	335		63	371	
28	336	Narses, brother of Shapur, captures Amida; Constantius defeats and kills him.	64	372	
29	337	Constantine dies. Shapur besieges Nisibis.	65	373	
30	338		66	374	
31	339		67	375	
32	340		68	376	
33	341		69	377	
34	342		70	378	
35	343	Battle of Singara.	71	379	
36	344				

**Gobl Ia/6a issue: With Ahuramazda in flames above altar, facing right**



Shapur II (309 - 379 AD)

AV Dinar

20 mm.

7.26 gm.

Gobl SN Ia/6a; SNS Ib1/3a

Diameter of obverse dotted border=18 mm.; diameter of reverse border=19 mm.

Die position=3h

Obverse:

Reverse:

Note: Courtesy Robert W. Schaaf collection.



Shapur II (309 - 379 AD)

AV Dinar

20 x 19 mm.

4.82 gm.

Gobl SN Ia/6a (plate -); Gobl Kushan 1325v. (East/Kabul)

Diameter of obverse dotted border=n/a; diameter of reverse border=n/a

Die position=3h

[reverse](#)

Obverse:

Reverse:

Note: Courtesy Robert W. Schaaf collection.



Shapur II (309 - 379 AD)

AV 1/6 Dinar

13 x 14 mm.

1.30 gm.

Gobl SN Ia/6a; Gobl Kushan

Diameter of obverse dotted border=11 mm.; diameter of reverse border=12 mm.

Die position=3h

[reverse](#)

Obverse:

Reverse: Bust of Ahuramazda, right, in flames above.

Note: Courtesy Robert W. Schaaf collection.



[11K JPG](#)

Shapur II (309 - 379 AD)

AV 1/12 Dinar

15 mm.

0.51 gm.

Gobl SN Ia/6a; Gobl Kushan

Diameter of obverse dotted border=14 mm.; diameter of reverse border=13 mm.

Die position=3h

[reverse](#)

Obverse:

Reverse: Bust of Ahuramazda, right, in flames above.

Note: Ex-mount. Courtesy Robert W. Schaaf collection.



[116k JPG](#)

Shapur II (309 - 379 AD)

AR Drachm

23 mm.

4.30 gm.

Gobl SN Ia/6a; SNS Ib1/3a Mint: XII ("East")

Diameter of obverse dotted border=21 mm.; diameter of reverse border=22 mm.

Die position=3h

Obverse:

Reverse:

Note: Courtesy Robert W. Schaaf collection.



[88k JPG](#)

Shapur II (309 - 379 AD)

AR Drachm

22 mm.

3.69 gm.

Gobl SN Ia/6a; SNS Ib1/3a

Diameter of obverse dotted border=21 mm.; diameter of reverse border=22 mm.

Die position=3h

Obverse:

Reverse:

Note: Courtesy Robert W. Schaaf collection.



[100k JPG](#)

Shapur II (309 - 379 AD)

AR Drachm

29 x 30 mm.

4.11 gm.

Gobl SN Ia/6a; SNS Ib1/3a Mint: IX ("Kabul")

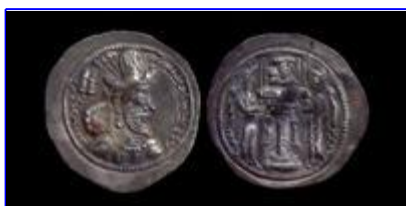
Diameter of obverse dotted border=23 mm.; diameter of reverse border=24 mm.

Die position=3h

Obverse:

Reverse:

Note: Courtesy Robert W. Schaaf collection.



[100K JPG](#)

Shapur II

AR Drachm

26 x 27 mm.

4.00 gm.

Gobl SN Ia/6a; SNS Ib1/3a Mint: IX ("Kabul")

Diameter of obverse dotted border=22 mm.; diameter of reverse border=22 mm.

Die position=3h

Obverse:

Reverse:



[100k JPG](#)

Shapur II (309 - 379 AD)

AR Drachm

29 x 28 mm.

3.86 gm.

Gobl SN Ia/6a; SNS Ib1/3a Mint: IX ("Kabul")

Diameter of obverse dotted border=23 mm.; diameter of reverse border=23 mm.

Die position=5n

Obverse: Large 'swirls' in crown.

Reverse: Attendants reversed.

Note: Courtesy Robert W. Schaaf collection.



[16K JPG](#)

Shapur II (309 - 379 AD)

AR Drachm

23 mm.

4.21 gm.

Gobl SN Ia/6a; Gobl Kushan

Diameter of obverse dotted border=22 mm.; diameter of reverse border=22 mm.

Die position=3h

[reverse](#)

Obverse: Interrupted Pahlavi legend.

Reverse: Pellet at bottom of altar shaft. Bust of Ahuramazda, right, in flames above.

Note: Courtesy Robert W. Schaaf collection.



[23K JPG](#)

Shapur II (309 - 379 AD)

AR Drachm

23 x 25 mm.

4.17 gm.

Gobl SN Ia/6a; Gobl Kushan 1256

Diameter of obverse dotted border=22 mm.; diameter of reverse border=22 mm.

Die position=3h

[reverse](#)

Obverse: Interrupted Pahlavi legend.

Reverse:

Note: Courtesy Robert W. Schaaf collection. Interesting crude style.



[22K JPG](#)

Shapur II (309 - 379 AD)

AR Drachm

22 mm.

4.16 gm.

Gobl SN Ia/6a; Gobl Kushan

Diameter of obverse dotted border=21 mm.; diameter of reverse border=21 mm.

Die position=2h

[reverse](#)

Obverse: Interrupted Pahlavi legend. Odd beard.

Reverse: Bust of Ahuramazda right in flames above

REVERSE: Bust of Ahuramazda, right, in flames above.

Note: Courtesy Robert W. Schaaf collection.



[18K JPG](#)

Shapur II (309 - 379 AD)

AR Drachm

20 x 21 mm.

3.93 gm.

Gobl SN Ia/6a; Gobl Kushan

Diameter of obverse dotted border=19 mm.; diameter of reverse border=20 mm.

Die position=3h

[reverse](#)

Obverse: Continuous Pahlavi legend.

Reverse: Bust of Ahuramazda, right, in flames above. Pahlavi 'H' to right of altar shaft.

Note: Courtesy Robert W. Schaaf collection.



[18k JPG](#)

Shapur II (309 - 379 AD)

AR Drachm

21 mm.

4.31 gm.

Mitchiner ACW 882; Gobl SN Ia/6a (plate VI/105); Gobl Kushan 1223 (Ctesiphon)

Diameter of obverse dotted border=20 mm.; diameter of reverse border=20 mm.

Die position=4h

[reverse](#)

Obverse: Continuous Pahlavi legend.

Reverse: Fire altar with two attendants holding short staves and facing altar; Rast (*Just*) on altar shaft. Bust of Ahuramazda, right, in flames above. Pahlavi legend.



[25k JPG](#)

Shapur II (309 - 379 AD)

AR Drachm

27 x 26 mm.

4.10 gm.

Gobl SN Ia/6a; Gobl Kushan -

Diameter of obverse dotted border=22 mm.; diameter of reverse border=22 mm.

Die position=3h

[reverse](#)

Obverse: Bearded bust right wearing turretted headdress without ear pieces; globe above. Continuous Pahlavi legend.

Reverse: Fire altar with two attendants holding staves (?) and facing altar; partial legend on altar shaft. Bust of Ahuramazda, right, in flames above. Pahlavi legend.

Note: This may be an imitation; the reverse is especially stylized.



[19k JPG](#)

Shapur II (309 - 379 AD)

AR Drachm

27 x 28 mm.

4.02 gm.

Mitchiner ACW 887; Gobl SN Ia/6a (plate VI/102); Gobl Kushan 1324 (Kabul)

Diameter of obverse dotted border=23 mm.; diameter of reverse border=23 mm.

Die position=3h

[reverse](#)

Obverse: Interrupted Pahlavi legend.

Reverse: Pahlavi legend.



[15k JPG](#)

Shapur II (309 - 379 AD)

AR Drachm

21 x 22 mm.

3.80 gm.

Gobl SN Ia/6a; Gobl Kushan 1324v. (Kabul)

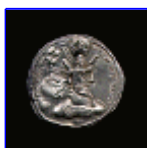
Diameter of obverse dotted border=19 mm.; diameter of reverse border=20 mm.

Die position=3h

[reverse](#)

Obverse: Pahlavi legend in front of bust only.

Reverse: No legend.



[17K JPG](#)

Shapur II (309 - 379 AD)

AR Drachm

23 x 22 mm.

3.27 gm.

Gobl SN Ia/6a; Gobl Kushan

Diameter of obverse dotted border=22 mm.; diameter of reverse border=21 mm.

Die position=3h

[reverse](#)

Obverse: Pahlavi legend on either side of bust.

Reverse: Bust of Ahuramazda, right, in flames above.

Note: Courtesy Robert W. Schaaf collection.





[22k JPG](#)

Shapur II (309 - 379 AD)

AR Drachm

29 x 30 mm.

4.24 gm.

Gobl SN ; Gobl Kushan 1329

Diameter of obverse dotted border=24 mm.; diameter of reverse border=23 mm.

Die position=3h

[reverse](#)

Obverse:

Reverse:

Note: Courtesy William B. Warden, Jr. collection.



[21k JPG](#)

Shapur II (309 - 379 AD)

AR Drachm (Eastern issue: Turan series)

29 mm.

4.06 gm.

Mitchiner ACW 892-894; Gobl SN Ia/6a (plate -)

Diameter of obverse dotted border=23 mm.; diameter of reverse border=21 mm.

Die position=3h

[reverse](#)

Obverse: Very crude bearded bust right wearing turreted headdress without ear pieces; globe above. Trace of Pahlavi legend.

Reverse: Fire altar with two attendants holding short staves and facing altar; Rast (*Just*) on altar shaft (blundered). Bust of Ahuramazda in flames above.

Note: It appears that the legend has been effaced from this die. Maybe an imitation.



[28k JPG](#)

Shapur II (309 - 379 AD)

AR Drachm

29 mm.

3.19 gm.

Gobl SN Ia/6a

Diameter of obverse dotted border=26 mm.; diameter of reverse border=25 mm.

Die position=3h

[reverse](#)

Obverse:

Reverse:

Note: Crude style. Courtesy Alexander Akin collection.



[20K JPG](#)

Shapur II (309 - 379 AD)

AR Drachm

25 x 24 mm.

4.15 gm.

Gobl SN Ia/6a; Gobl Kushan

Diameter of obverse dotted border=20 mm.; diameter of reverse border=21 mm.

Die position=3h

[reverse](#)

Obverse:

Reverse:

Note: Courtesy Robert W. Schaaf collection.



[25K JPG](#)

Shapur II (309 - 379 AD)

AR Drachm

27 x 28 mm.

4.17 gm.

Gobl SN Ia/6a; Gobl Kushan

Diameter of obverse dotted border=23 mm.; diameter of reverse border=22 mm.

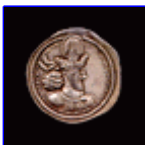
Die position=3h

[reverse](#)

Obverse:

Reverse:

Note: Struck over an earlier coin. Courtesy Robert W. Schaaf collection.



[20K JPG](#)

Shapur II (309 - 379 AD)

AR Drachm

23 mm.

4.14 gm.

Gobl SN Ia/6a; Gobl Kushan

Diameter of obverse dotted border=20 mm.; diameter of reverse border=20 mm.

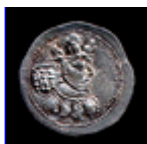
Die position=3h

[reverse](#)

Obverse:

Reverse:

Note: Courtesy Robert W. Schaaf collection.



[29K JPG](#)

Shapur II (309 - 379 AD)

AR Drachm

27 mm.

4.14 gm.

Gobl SN Ia/6a; Gobl Kushan

Diameter of obverse dotted border=23 mm.; diameter of reverse border=24 mm.

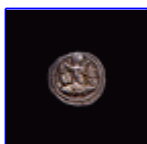
Die position=3h

[reverse](#)

Obverse: Interrupted Pahlavi legend.

Reverse: Bust of Ahuramazda, right, in flames above.

Note: Courtesy Robert W. Schaaf collection. Extremely crude style; possible imitation.



[9K JPG](#)

Shapur II (309 - 379 AD)

AR Obol

14 x 13 mm.

0.66 gm.

Gobl SN Ia/6a; Gobl Kushan 1308

Diameter of obverse dotted border=12 mm.; diameter of reverse border=12 mm.

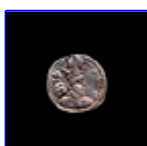
Die position=3h

[reverse](#)

Obverse: Flower or star before bust. Continuous Pahlavi legend.

Reverse:

Note: Courtesy Robert W. Schaaf collection.



[11K JPG](#)

Shapur II (309 - 379 AD)

AR Obol

14 mm.

0.68 gm.

Gobl SN Ia/6a; Gobl Kushan 1271

Diameter of obverse dotted border=14 mm.; diameter of reverse border=14 mm.

Die position=3h

[reverse](#)

Obverse: Interrupted Pahlavi legend.

Reverse:

Note: Courtesy Robert W. Schaaf collection.



[100k JPG](#)

Shapur II (309 - 379 AD)

AE Unit

30 x 28 mm.

8.48 gm.

Gobl SN Ia/6a; SNS SNS Ib1/3a Mint: IX ("Kabul")

Diameter of obverse dotted border=23 mm.; diameter of reverse border=23 mm.

Die position=2h

Obverse:

Reverse:

Note: Courtesy Robert W. Schaaf collection.



[100k JPG](#)

Shapur II (309 - 379 AD)

AE Unit

14 x 15 mm.

1.94 gm.

Gobl SN Ia/6a; SNS Ib1/3a Mint: IX ("Kabul")

Diameter of obverse dotted border=n/a; diameter of reverse border=n/a

Die position=3h

Obverse:

Reverse:

Note: Courtesy Robert W. Schaaf collection.



[100k JPG](#)

Shapur II (309 - 379 AD)

AE Unit

10 x 11 mm.

1.57 gm.

Gobl SN Ia/6a; SNS Ib1/3a Mint: IX ("Kabul")

Diameter of obverse dotted border=n/a; diameter of reverse border=n/a

Die position=9h

Obverse: Annulet in right field.

Reverse:

Note: Courtesy Robert W. Schaaf collection.



[14K JPG](#)

Shapur II (309 - 379 AD)

Pb Unit

17 x 18 mm.

1.52 gm.

Gobl SN Ia/6a (?); Gobl Kushan -

Diameter of obverse dotted border=13 mm.; diameter of reverse border=12 mm.

Die position=3h

[reverse](#)

Obverse: Fleur-de-lys in front of bust.

Reverse:

[Large 300%/150 dpi scan obv/rev \[95K JPG\]](#)

Note: Courtesy Robert W. Schaaf collection.



[11K JPG](#)

Shapur II (309 - 379 AD)

Pb Unit

16 x 17 mm.

5.12 gm.

Gobl SN Ia/6a; Gobl Kushan

Diameter of obverse dotted border=n/a; diameter of reverse border=n/a

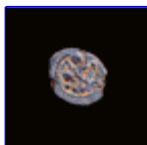
Die position=3h

[reverse](#)

Obverse:

Reverse:

Note: Courtesy Robert W. Schaaf collection.



[9K JPG](#)

Shapur II (309 - 379 AD)

Pb Unit

14 x 15 mm.

2.25 gm.

Gobl SN Ia/6a; Gobl Kushan -

Diameter of obverse dotted border=12 mm.; diameter of reverse border=11 mm.

Die position=2h

[reverse](#)

Obverse:

Reverse:

[Large 300%/150 dpi scan obv/rev \[61K JPG\]](#)

Note: Courtesy Robert W. Schaaf collection.

**Gobl Ib/6a issue: Large pearls; Ahuramazda in flames above altar, facing right**



Shapur II (309 - 379 AD)

AR Drachm

27 mm.

4.27 gm.

Gobl SN Ib/6a; SNS Ib1/3a Mint: "ART"

Diameter of obverse dotted border=22 mm.; diameter of reverse border=24 mm.

Die position=3h

Obverse:

Reverse:

Note: Courtesy Robert W. Schaaf collection.



Shapur II (309 - 379 AD)

AR Drachm

25 mm.

4.22 gm.

Gobl SN Ib/6a; Gobl Kushan

Diameter of obverse dotted border=23 mm.; diameter of reverse border=23 mm.

Die position=3h

[reverse](#)

Obverse:

Reverse:

Note: Courtesy Robert W. Schaaf collection.

**Gobl II/6a issue: Crown of pearls; Ahuramazda in flames above altar, facing right**



Shapur II (309 - 379 AD)

AE Unit

file:///G:/flh-10/hoseini/prehist/sasa/69.htm

29 mm.

9.26 gm.

Gobl SN II/6a; Gobl Kushan 1347

Diameter of obverse dotted border=21 mm.; diameter of reverse border=21 mm.

Die position=2h

[reverse](#)

Obverse:

Reverse:

Note: Courtesy Robert W. Schaaf collection

[http://www.grifterrec.com/coins/sasania/sas\\_shapII\\_1.html](http://www.grifterrec.com/coins/sasania/sas_shapII_1.html)