

Varhran V

Son of Yazdgard I. Reign 420 - 438 AD.

Denominations: D; d, Obol; U/6; Pb/4, Pb/8

Twenty-two (22) mints listed in SNS: AH, ART, AS, AT, AW, AY, BBA, BYSh, DA, GW, GWL, HLYDY, KA, KL, LD, LDY, LYW, MA, MY, ST, ShY, WH. All MLW coins may not be imitations (see below).

Regnal year to AD date conversion:

REGNAL YEAR	AD YEAR	NOTES
1	420	Persecution of Christians.
2	421	War with Rome.
3	422	
4	423	
5	424	
6	425	
7	426	
8	427	War in the East (Kidarites (?)).
9	428	
10	429	
11	430	
12	431	
13	432	
14	433	
15	434	
16	435	
17	436	
18	437	
19	438	

Gobl I/1 issue: Without Ahuramazda in flames above altar



[100k JPG](#)

Varhran V (420 - 438 AD)

AR Drachm

Mint: AH (?)

Regnal year: none

29 mm.

4.20 gm.

Gobl I/1; SNS Ib2/1

Diameter of obverse dotted border=22 mm.; diameter of reverse border=23 mm.

Die position=3h

Obverse:

Reverse:

Note: Courtesy Robert W. Schaaf collection.



[100K JPG](#)

Varhran V

AR Drachm

Mint: HLDY

Regnal year: n/a

27 x 28 mm.

3.49 gm.

SNS Ib2/1; Gobl SN I/1; Mochiri ENIS II 94

Diameter of obverse dotted border=22 mm.; diameter of reverse border=22 mm.

Die position=3h

Obverse:

Reverse:

Note: Not listed for obverse type in SNS 3 (see Tafel 63, A20 for Ib1/1 example); not listed for mint.



[23k JPG](#)

Varhran V (420 - 438 AD)

AR Drachm

Mint: AW (?)

IMMIL. AVV ()

Regnal year: none

30 x 29 mm.

4.12 gm.

Gobl SN I/1

Diameter of obverse dotted border=22 mm.; diameter of reverse border=23 mm.

Die position=3h

[reverse](#)

Obverse:

Reverse: Empty crescent to right of altar flame; 'rast' on altar shaft.

Note: Courtesy William B. Warden, Jr. collection.



[26k JPG](#)

Varhran V (420 - 438 AD)

AR Drachm

Mint: LDY

Regnal year: none

28 mm.

4.14 gm.

Gobl SN I/1

Diameter of obverse dotted border=22 mm.; diameter of reverse border=22 mm.

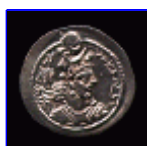
Die position=3h

[reverse](#)

Obverse:

Reverse: Empty crescent to right of altar flame; mint to left; 'rast' on altar shaft (written upside down (?)).

Note: Courtesy Robert W. Schaaf collection.



[21k JPG](#)

Varhran V (420 - 438 AD)

AR Drachm

Mint: AS

Regnal year: none

27 x 26 mm.

4.16 gm.

Gobl SN I/1

Diameter of obverse dotted border=22 mm.; diameter of reverse border=22 mm.

Die position=3h

[reverse](#)

Obverse:

Reverse: Empty crescent to right of altar flame; mint to left; 'rast' on altar shaft.

Note: Courtesy Robert W. Schaaf collection.



[100k JPG](#)

Varhnan V (420 - 438 AD)

AR Drachm

Mint: none

Regnal year: none

27 x 25 mm.

3.38 gm.

Gobl I/1; SNS Ib1/1 Mint (unsigned "Herat")

Diameter of obverse dotted border=22 mm.; diameter of reverse border=22 mm.

Die position=2h

Obverse:

Reverse:

Note: Courtesy Robert W. Schaaf collection.

Gobl I/2 issue: With Ahuramazda in flames replacing top part of altar



[116k JPG](#)

Varhnan V (420 - 438 AD)

AR Drachm

Mint: GW

Regnal year: none

29 x 28 mm.

4.00 gm.

Gobl SN I/2; SNS Ia/2

Diameter of obverse dotted border=24 mm.; diameter of reverse border=23 mm.

Die position=3h

Obverse:

Reverse:

Note: Courtesy Robert W. Schaaf collection.



[24k JPG](#)

Varhnan V (420 - 438 AD)

AR Drachm

Mint: GW

Regnal year: none

30 mm.

4.16 gm.

Gobl SN I/2

Diameter of obverse dotted border=24 mm.; diameter of reverse border=23 mm.

Die position=3h

[reverse](#)

Obverse:

Reverse:

Note: Courtesy William B. Warden, Jr. collection.



[21k JPG](#)

Varhran V (420 - 438 AD)

AR Drachm

Mint: GW

Regnal year: none

30 mm.

4.13 gm.

Gobl SN I/2

Diameter of obverse dotted border=23 mm.; diameter of reverse border=23 mm.

Die position=3h

[reverse](#)

Obverse:

Reverse:

Note: Courtesy Robert W. Schaaf collection.



[144k JPG](#)

Varhran V (420 - 438 AD)

AR Drachm

Mint: AH

Regnal year: none

28 mm.

4.16 gm.

Gobl SN I/2; SNS Ia/2

Diameter of obverse dotted border=22 mm.; diameter of reverse border=23 mm.

Die position=3h

Obverse:

Reverse:

Note: Courtesy Robert W. Schaaf collection.



[100k JPG](#)

Varhran V (420 - 438 AD)

AR Drachm

Mint: LYW

Regnal year: none

30 mm.

4.07 gm.

Gobl I/2; SNS Ia1/2

Diameter of obverse dotted border=21 mm.; diameter of reverse border=23 mm.

Die position=3h

Obverse:

Reverse:

Note: Courtesy Robert W. Schaaf collection.



[128k JPG](#)

Varhran V (420 - 438 AD)

AR Drachm

Mint: AT

Regnal year: none

29 x 30 mm.

4.06 gm.

Gobl SN I/2; SNS Ib/2

Diameter of obverse dotted border=21 mm.; diameter of reverse border=23 mm.

Die position=3h

Obverse:

Reverse:

Note: Courtesy Robert W. Schaaf collection.



[26k JPG](#)

Varhran V (420 - 438 AD)

AR Drachm

Mint: AT

Regnal year: none

30 x 28 mm.

4.21 gm.

Mitchiner ACW 957, Sellwood ISC 45 (type I), Gobl SN I/2 (plate IX/155)

Diameter of obverse dotted border=22 mm.; diameter of reverse border=23 x 25 mm.

Die position=3h

[reverse](#)

Obverse:

Reverse:



[100k JPG](#)

Varhran V (420 - 438 AD)

AR Drachm

Mint: HLYDY

Regnal year: none

29 mm.

4.06 gm.

Gobl I/2; SNS Ib1/2

Diameter of obverse dotted border=24 mm.; diameter of reverse border=24 mm.

Die position=3h

Obverse:

Reverse:

Note: Courtesy Robert W. Schaaf collection.



[100k JPG](#)

Varhran V (420 - 438 AD)

AR Drachm

Mint: MLW

Regnal year: none

30 x 31 mm.

3.69 gm.

Gobl I/2; SNS Ib1/2

Diameter of obverse dotted border=25 mm.; diameter of reverse border=28 mm.

Die position=3h

Obverse:

Reverse:

Note: Courtesy Robert W. Schaaf collection.



[100k JPG](#)

Varhran V (420 - 438 AD)

AR Drachm

Mint: LD

Regnal year: none

Regnal year: none

28 mm.

4.11 gm.

Gobl I/2; SNS Ib2/2

Diameter of obverse dotted border=22 mm.; diameter of reverse border=21 mm.

Die position=3h

Obverse:

Reverse:

Note: Courtesy Robert W. Schaaf collection.



[22k JPG](#)

Varhran V (420 - 438 AD)

AR Drachm

Mint: LD

Regnal year: none

28 mm.

4.11 gm.

Gobl SN I/2

Diameter of obverse dotted border=22 mm.; diameter of reverse border=21 mm.

Die position=3h

[reverse](#)

Obverse:

Reverse:

Note: Courtesy Robert W. Schaaf collection.



[25k JPG](#)

Varhran V (420 - 438 AD)

AR Drachm

Mint: BYSh

Regnal year: none

28 x 29 mm.

4.16 gm.

Gobl SN I/2

Diameter of obverse dotted border=22 mm.; diameter of reverse border=22 mm.

Die position=3h

[reverse](#)

Obverse: 'Kair Pakar' replaces 'Ramshahr' in legend.

Reverse:

Note: Courtesy Robert W. Schaaf collection.



[22k JPG](#)

Varhran V (420 - 438 AD)

AR Drachm

Mint: KA

Regnal year: none

29 mm.

4.06 gm.

Gobl SN I/2

Diameter of obverse dotted border=21 mm.; diameter of reverse border=20 mm.

Die position=3h

[reverse](#)

Obverse:

Reverse:

Note: Courtesy Robert W. Schaaf collection.



[30k JPG](#)

Varhran V (420 - 438 AD)

AR Drachm

Mint: AS

Regnal year: none

30 mm.

4.00 gm.

Gobl SN I/2

Diameter of obverse dotted border=22 mm.; diameter of reverse border=22 mm.

Die position=3h

[reverse](#)

Obverse:

Reverse:



[23k JPG](#)

Varhran V (420 - 438 AD)

AR Drachm

Mint: LYW

Regnal year: none

30 mm.

4.17 gm.

Gobl SN I/2

Diameter of obverse dotted border=23 mm.; diameter of reverse border=23 mm.

Die position=3h

[reverse](#)

Obverse: Different, more stylized crown.

Reverse:

Note: Courtesy William B. Warden, Jr. collection.



[25k JPG](#)

Varhran V (420 - 438 AD)

AR Drachm

Mint: TY

Regnal year: none

29 mm.

4.12 gm.

Gobl SN I/2

Diameter of obverse dotted border=21 mm.; diameter of reverse border=21 mm.

Die position=2h

[reverse](#)

Obverse:

Reverse:

Note: Although the first letterform of the mint name is written as a 'T,' this may be an 'M,' representing MY or ML mint.



[20k JPG](#)

Varhran V (420 - 438 AD)

AR Drachm

Mint: unclear

Regnal year: none

29 x 25 mm.

3.54 gm.

Gobl SN I/2

Diameter of obverse dotted border=21 mm.; diameter of reverse border=22 mm.

Die position=4h

[reverse](#)

Obverse: Letterforms represented by pellets.

Reverse: Possible blundered 'WH.'

Note: Ex-mount and probably an imitation; flan slightly clipped.

Eastern issues: North-Eastern series

These 'Merv' types are now considered to be imitations. Go to the [Sasanian Imitations](#) page.



[27k JPG](#)

Varhran V (420 - 438 AD)

AR Drachm

Mint: MLW (?)

Regnal year: none

31 mm.

3.97 gm.

Gobl SN I/2

Diameter of obverse dotted border=25 mm.; diameter of reverse border=26 mm.

Die position=2h

[reverse](#)

Obverse:

Reverse:

Note: Courtesy Robert W. Schaaf collection.

Gobl I/1 issue: With 'MLWY' aside the altar flame



[24k JPG](#)

Varhran V (420 - 438 AD)

AR Drachm

Mint: MLWY

Regnal year: none

30 mm.

3.48 gm.

Gobl SN I/1

Diameter of obverse dotted border=25 mm.; diameter of reverse border=25 mm.

Die position=3h

[reverse](#)

Obverse:

Reverse: MLWY to right of altar flame.

Note: Courtesy Robert W. Schaaf collection.



[21k JPG](#)

Varhran V (420 - 438 AD)

AR Drachm

Mint: MLWY

Regnal year: none

28 x 29 mm.

3.64 gm.

Gobl SN I/1

Diameter of obverse dotted border=26 mm.; diameter of reverse border=26 mm.

Die position=3h

[reverse](#)

Obverse:

Reverse: MLWY to right of altar flame.

Note: Courtesy Robert W. Schaaf collection.

NOTE: COURTESY ROBERT W. SCHAAF COLLECTION.



[24k JPG](#)

Varhran V (420 - 438 AD)

AR Drachm

Mint: MLWY

Regnal year: none

28 x 29 mm.

3.69 gm.

Gobl SN I/1

Diameter of obverse dotted border=25 mm.; diameter of reverse border=24 mm.

Die position=3h

[reverse](#)

Obverse:

Reverse: MLWY to left of altar flame.

Note: Courtesy Robert W. Schaaf collection.



[25k JPG](#)

Varhran V (420 - 438 AD)

AR Drachm

Mint: MLWY

Regnal year: none

29 mm.

3.84 gm.

Gobl SN I/1

Diameter of obverse dotted border=26 mm.; diameter of reverse border=26 mm.

Die position=3h

[reverse](#)

Obverse:

Reverse: MLWY to left of altar flame.

Note: Courtesy Robert W. Schaaf collection.



[24k JPG](#)

Varhran V (420 - 438 AD)

AR Drachm

Mint: MLWY

Regnal year: none

29 x 30 mm.

3.13 gm.

Gobl SN I/1

Diameter of obverse dotted border=26 mm.; diameter of reverse border=27 mm.

Die position=3h

file:///G:/flh-10/hoseini/prehist/sasa/40.htm

[reverse](#)

Obverse:

Reverse: MLWY to left of altar flame.

Note: Courtesy Robert W. Schaaf collection.

http://www.grifterrec.com/coins/sasania/sas_varV_1.html